

ProStand™

3-Section Wind-Up Stand w/Auto Self-Locking Device

- Chrome plated steel stand w/geared column
- Versatile top head accepts 1 1/8" spigot (included), also has a pop-up 5/8" 'baby' male spigot
- Three-section column diameter: 2.17 in. (55 mm), 1.77 in. (45 mm), 1.5 in. (38 mm)
- Two risers extend simultaneously at 1.75 in. (4.4 cm) per handle turn
- Safety cable ensures simultaneous retrieval of all sections
- Leg diameter: 1.18 in. (30 mm)
- Includes one leveling leg
- Optional casters available or will fit other brands of casters

FEATURES



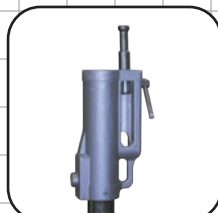
Leveling leg for use on uneven terrain.



Brake tension adjustable via hex key.



Built-in footstep.



Pop-up 5/8" "baby" Spigot.



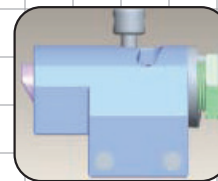
Spigot included for fixture mounting.



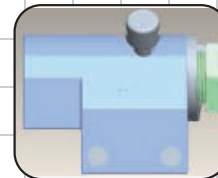
NEW DESIGN!

Self-Locking device prevents accidental drop-off for added safety.

Auto Self-Locking device:



Lock position.
The safety pin will automatically engage holes in the tube while winding up.



Unlock position.
An internal spring brings the safety pin back.

SPECIFICATIONS

Closed Length	71.25 in. (181 cm)
Max. Height	149.6 in. (380 cm)
Base Diameter	50.4 in. (128 cm)
Max. Lift Capacity	66.1 lbs. (30 kg)
Self Weight	49.4 lbs. (22.4 kg)



Production Supplies & Services Worldwide

tmb-info@tmb.com

LOS ANGELES

LONDON

NEW YORK

BEIJING

TORONTO

Tel: +1 818.899.8818

Tel: +44 (0)20.8574.9700

Tel: +1 201.896.8600

Tel: +86 10.8492.1587

Tel: +1 519.538.0888

LITPROSTAND-080913

© TMB