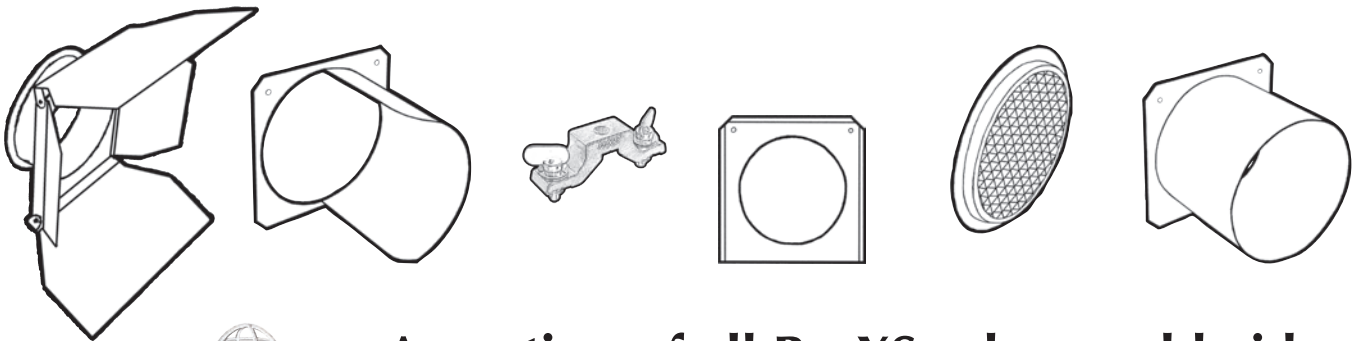


# ProXS™

## PROFESSIONAL FIXTURE ACCESSORIES



An ESTA Foundation charity

A portion of all ProXS sales worldwide  
is donated to Behind the Scenes.  
\$100,000 and counting!

Awesome fixture accessories  
for an awesome cause!

Innovative, Performance-Driven Show Technology Since 1983

tmb.com

Los Angeles  
+1 818-899-8818

London  
+44 (0)20-8574-9700

New York  
+1 201-896-8600

Beijing  
+86 10-8492-1587

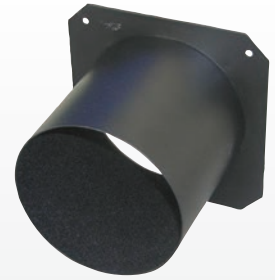
Toronto  
+1 519-538-0888



## Top Hats

- Cold-rolled steel construction with glare-reducing flame-retardant flocked finish standard on internal surfaces

Part No.	To Fit Fixture	Frame Size	Aperture Diameter	Snoot Length
PRX6TH5	S4, SL, Shakespeare, Selecon	6.25" x 6.25"	5"	5"
PRX7TH6	6" Leko, 6" Theatre Fresnel, 360Q	7.5" x 7.5"	6"	6"
PRX7TH6S	S4 Zoom, S4 PAR, PARNel	7.5" x 7.5"	6.75"	6"
PRX12TH10	S4 10°, SL 10°	12" x 12"	10"	10"



## Half Hats

- Cold-rolled steel construction with glare-reducing flame-retardant flocked finish standard on internal surfaces

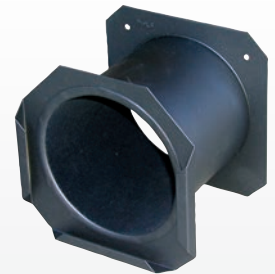
Part No.	To Fit Fixture	Frame Size	Aperture Diameter	Snoot Length
PRX6HH5	S4, SL, Shakespeare, Selecon	6.25" x 6.25"	5"	5"
PRX6HH3	S4, SL, Shakespeare, Selecon	6.25" x 6.25"	5"	3"
PRX7HH6	6" Leko, 6" Theatre Fresnel, 360Q	7.5" x 7.5"	6"	6"
PRX7HH6S	S4 Zoom, S4 PAR, PARNel	7.5" x 7.5"	6.75"	6"
PRX12HH10	S4 10°, SL 10°	12" x 12"	10"	10"



## Color Extenders

- Cold-rolled steel construction
- Helps prevent gel burnout
- Tough powdercoated black finish

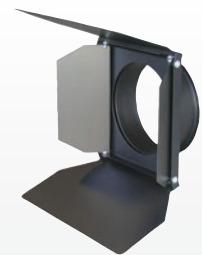
Part No.	To Fit Fixture	Frame Size	Aperture Diameter	Snoot Length
PRX6CX5	S4, SL, Shakespeare, Selecon	6.25" x 6.25"	5"	5"
PRX7CX3	S4 Zoom, S4 PAR, PARNel, 6" Leko, 6" Theatre Fresnel, 360Q	7.5" x 7.5"	6.75"	3"



## 4-Way Barndoors

- Full size aperture does not limit light output of fixture
- Available with or without built in 2" color extender

Part No.	To Fit Fixture	Frame Size	Snoot Length
PRX7BDR2	S4 PAR, PARNel, 6" Theatre Fresnel - No Color Extender	7.5" x 7.5"	0"
PRX7BDRE	S4 PAR, PARNel, 6" Theatre Fresnel - With Color Extender	7.5" x 7.5"	2"



## TVMP Adapter

- Converts theatrical lighting instruments to interface with studio grip equipment
- Machined steel construction with chrome-plated finish

Part No.	To Fit Fixture
PRXTVMP	Any with 1/2" hole in yoke





## Donuts

- Cold-rolled steel construction
- Tough powdercoated black finish

Part No.	To Fit Fixture	Frame Size	Aperture Diameter
PRX6DN	S4, SL, Shakespeare, Selecon	6.25" x 6.25"	3"
PRX7DN	6" Leko, 6" Theatre Fresnel, 360Q	7.5" x 7.5"	3"
PRX12DN	S4 10°, SL 10°	12" x 12"	6"
PRX14DN	S4 5°	14" x 14"	7"



## Color Frames

- Cold-rolled steel construction
- Tough powdercoated black finish

Part No.	To Fit Fixture	Frame Size	Aperture Diameter
PRX6CF	S4, SL, Shakespeare, Selecon	6.25" x 6.25"	5"
PRX7CF	6" Leko, 6" Theatre Fresnel, 360Q	7.5" x 7.5"	6"
PRX7CFS	S4 Zoom, S4 PAR, PARNel	7.5" x 7.5"	6.75"
PRX10CF	PAR64, 8" Theatre Fresnel	10" x 10"	8"
PRX12CF	S4 10°, SL 10°	12" x 12"	10"
PRX14CF	S4 5°	14" x 14"	12"



## Pattern Holders

- Traditional aluminum sandwich-style design
- Includes insulated pull handle

Part No.	To Fit Fixture	Pattern Size
PRXPHA	S4	A
PRXPHB	S4	B
PRXPHG	S4	86mm Glass
PRXPHM	S4 Junior	M
PRXPHMG	S4 Junior	86mm Glass



## Drop-in Irises

- Fits ETC Source Four® or Jr. iris slot
- Leaves have 600° temperature rating

Part No.	To Fit Fixture	No. of Leaves
PRXIRISS4	S4	18
PRXIRISS424	S4	24



## Concentric Ring Louver

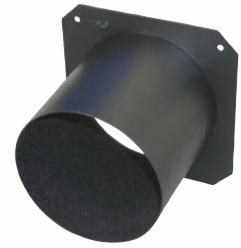
- Low profile spill control for the Source Four® PAR and PARNel.
- Cold-rolled steel construction.
- As effective as a 6" snoot.
- Tough powdercoated black finish.

Part No.	To Fit Fixture	Frame Size	Aperture Diameter	Snoot Length
PRX7CR	S4 PAR, PARNel	7.5" x 7.5"	6.75"	2"

## Special order items, please check for availability

### Top Hats

Part No.	To Fit Fixture	Frame Size	Aperture Diameter	Snoot Length
PRX6TH3*	S4, SL, Shakespeare, Selecon	6.25" x 6.25"	5"	3"
PRX7TH3*	6" Leko, 6" Theatre Fresnel, 360Q	7.5" x 7.5"	6"	3"
PRX7TH3S*	S4 Zoom, S4 PAR, PARNel	7.5" x 7.5"	6.75"	3"
PRX10TH8*	PAR64, 8" Theatre Fresnel	10" x 10"	8"	8"
PRX10TH3*	PAR64, 8" Theatre Fresnel	10" x 10"	8"	3"
PRX14TH12*	S4 5°	14" x 14"	12"	12"



### Half Hats

Part No.	To Fit Fixture	Frame Size	Aperture Diameter	Snoot Length
PRX10HH8*	PAR64, 8" Theatre Fresnel	10" x 10"	8"	8"
PRX14HH12*	S4 5°	14" x 14"	12"	12"



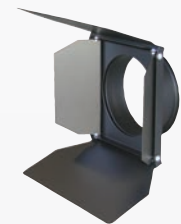
### Color Extenders

Part No.	To Fit Fixture	Frame Size	Aperture Diameter	Snoot Length
PRX6CX3*	S4, SL, Shakespeare, Selecon	6.25" x 6.25"	5"	3"
PRX7CX6*	S4 Zoom, S4 PAR, PARNel, 6" Leko, 6" Theatre Fresnel, 360Q	7.5" x 7.5"	6.75"	6"
PRX10CX5*	PAR64, 8" Theatre Fresnel	10" x 10"	8"	5"



### 4-Way Barndoors

Part No.	To Fit Fixture	Frame Size	Snoot Length
PRX9.5BDR*	PAR64 - No Color Extender	9.5" x 9.5"	0"



### Drop-in Irises

Part No.	To Fit Fixture	No. of Leaves
PRXIRISS4JR*	S4 Junior	18



### Egg Crate Louver

Part No.	To Fit Fixture	Frame Size	Aperture Diameter	Snoot Length
PRX7EC*	S4 PAR, PARNel	7.5" x 7.5"	6.75"	0.5"



### Omega Moving Light Bracket

Part No.	To Fit Fixture
PRXOMBRS*	Martin and other moving lights with 4.15"/105.5mm attachment spacing

